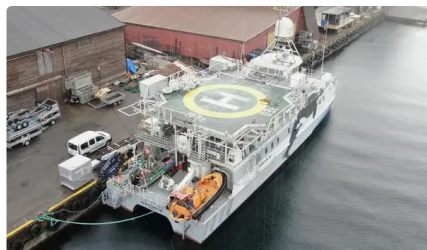


id 5783

Moottorialus


[TUTKIMUS / SUKELLUS / PAX KISSA ROVILLA, HIPADILLA, HELIDECKILLA](#)

Lähetystunnus 5783

Kategoria [Moottorialus](#)

Rakennusvuosi 2008

Lähtöksen lisäyspäivä 2022-03-06

lisännyt [Norsk Megling & Auksjon AS](#)

Laivan mitat

Kokonaispituus (LOA), m 35

Aluksen syväys, m 2.2

lisäinformaatio

Päämoottori for the «Queen of the Environment» and there are two MAN D2842LE 410, each with an output of 809 kW at 2160 rpm. Servogear has delivered gears of the type HD295 PTIR-HR (PTIL-HFR) 4.21: 1, and rotary propellers of the type 9P820-1002B and rudders of the type Effektor 9R054-HV. The steering machine is of the type Scana Mar-EI. Auxiliary motors and generators are supplied by Nogva Motorfabrikk AS and consist of two Nogva Deere with the designation 6068 TFM 50 of 83 kW at 1500 rpm. and two Stamford UCM 274 G with a power each of 83 kW, 230 V, 50 Hz, 104 kVA. Two bow thrusters of the type SB60-80 V80 and the thruster aft have the same designation, and they are supplied by MB Hydraulikk. At 2100 rpm. is the speed of 21.4 knots with an engine power of 735 kW, and a range of 864 nautical miles. At 2000 rpm. the speed can be 17.5 knots with an engine power of 600 kW, and a range of 970 nautical miles. At 1800 rpm. the speed is 16.4 knots at 540 kW

Itseliikkuva

Kannet 1

Matkustajat 50

Samanlaisia laivoja

[Näytä samanlaiset alukset](#)

Pyynnöt

[Ostopyynnöt vastaavat](#)

sähköposti

[Lähetää sähköpostia](#)